



TestWiz™ Sample Reports: Michigan

The following pages show some of the TestWiz reports with MEAP and other test data.

Highlights:

- The reports are available in three formats: PDF, Microsoft Word, and Microsoft Excel
- You may customize any report by filtering or selecting various elements called “parameters.” You can also change the types of scores being displayed on any of the reports.
- Several parameters can be combined to customize a report. Each user can customize his or her reports and can save those customizations for later use.
- A TestWiz Administrator can customize reports and make them available as Quick Reports for all users to see.
- The user interface for a running a report is the same, regardless of which assessment is being used for the report.

Student Profile

MEAP Grade 6 Fall 2006

Student: **Ronley, Tercel R**
 Grade: **6**
 ID: **8861360628**
 DOB: **10/24/1994**

District: **Willows**
 School: **Fisher Middle School**
 Class: **G6 Fisher Middle School**

Sp. Ed.:No-sped; Econ. Dis.:Yes-Ec.Dis; Ethnic Cat:Black; Lim. Eng.:No-LEP;

	RS	%COR	SS	PERF	MET	Performance Category
MATH TOTAL	31		607	Met	Yes	Met
Math-Core Items	29	47				
Math-Extended Items	2					
Math-Linking Items	4					
Math-Mult. Choice	26					
Math-Const. Response	5	63				
Number+Operations	16	48				
Measurement	4	33				
Geometry	4	44				
Data+Probability	7	70				
Math-Future Items	1					
ELA Reading+Writing			589	Basic	No	Basic
READING TOTAL	18		605	Met	Yes	Met
Reading-Core Items	18	51				
Reading-Linking Items	6					
Reading-Mult. Choice	15					
Reading Const. Response	3					
Reading-Word Recognition	1	100				
Reading-Narrative Text	6	50				
Reading-Informatnl Text	3	43				
Reading-Comprehension	8	53				
WRITING TOTAL	4	27	558	Appren.	No	Appren.
Writing Mult. Choice	0	0				
Writing Const. Response	4	40				
Writing-Process	4	29				
Writing-Grammar+Usage	0	0				
SOCIAL STUDIES TOTAL	27	55	615	Met	Yes	Met
Soc. Stud.- Mult. Choic	26	57				
Soc. Stud.- Hand Score	1	33				
History	3	30				
Geography	6	60				
Civics	5	50				
Economics	7	70				
Inquiry	5	83				
Discourse&Decision Mak.	1	33				

Score Legend			
RS	Raw Score	%COR	Percent Correct
PERF	Performance Category	MET	Met Standard?
SS	Scaled Score		

Item Details: BBA+AA+DA AAA+B++++C +A+++C++DB+ D++B++CABC ++++CAB+AA +BC+A14

Student - Profile (1.0)

What is special about this report?


- The scores are printed in the table section. Change them with the **Scores** parameter.
- Change the subtests with the **Subtests** parameter.
- Change the graph with the **Display Score** parameter.
- If the test has item level data, it will print on the bottom half of the report.
- You can hover over the item detail to get a description of the item.
- Optionally choose to print up to 5 demographic characteristics under the student's name using the **Sp. Code Display** parameter.

Student Profile with Objectives

MEAP Grade 4 Fall 2006

Student: Allington, Jalen P
Grade: 4
ID: 321866803
DOB: 11/07/1997

District: Willows
School: Cottage Street School
Class: G4 Cottage Street

	RS	SS	PERF	Performance Category
MATH TOTAL	31	399	Basic	 Basic

Objectives/Strands	Number Correct	Student Percent Correct	State Average Percent Correct
Math Total-Core Items	29 of 61	48	68
Number & Operations	16 of 31	52	70
Meaning	7 of 12	58	77
Fluency	5 of 9	56	65
Relationships	4 of 10	40	65
Measurement	9 of 18	50	66
Problem Solving	1 of 3	33	72
Units	8 of 15	53	65
Geometry	0 of 6	0	64
Geometric Shapes	0 of 3	0	59
Spatial Reasoning	0 of 3	0	69
Data & Probability	4 of 6	67	65

To the parents of: Jalen P Allington:

Above are the scores for Jalen's recent MEAP test. According to these scores, Jalen has not met proficiency in Math. The report also shows which area(s) were particularly problematic for Jalen. We would like to meet with you to discuss several options for intervention to help move Jalen towards proficiency.

Sincerely,
Mr. Andrew Jones
Principal

Student - Profile with Objectives (1.6)

What is special about this report?

- The report includes performance levels for each subtest as well as the student's performance by objective. It can be used for student improvement plans.
- Choose the **Scores** parameter to select up to four scores per subtest.
- Change the graph with the **Display Score** parameter.
- If a comparison score exists, select it with the **Gap Score** parameter.
- Choose to print up to 5 demographic characteristics under the student's name using the **Spc. Code Display** parameter.
- Optionally, create a custom letter to print along with the student's test scores.
- The report prints alphabetically by student within class.

Student Multi-Test Report

Student: **Everett, Alexis J**
 Grade: **6**
 ID: **8166238809**
 DOB: **03/27/1995**

District: **Willows**
 School: **Fisher Middle School**
 Class: **G6 Fisher Middle School**

	Date	RS	%COR	SS	PERF	Percent Correct
READING TOTAL	October, 2005	31		534	Met	
	October, 2006	27		638	Exceed	
Reading-Core Items	October, 2005	25	71			71
	October, 2006	27	77			77
Reading-Linking Items	October, 2005	6				
	October, 2006	8				
Reading-Mult. Choice	October, 2005	27				
	October, 2006	24				
Reading Const. Response	October, 2005	4	67			67
	October, 2006	3				
Reading-Word Recognition	October, 2005	1	100			100
	October, 2006	1	100			100
Reading-Narrative Text	October, 2005	5	63			63
	October, 2006	9	75			75
Reading-Informatnl Text	October, 2005	7	78			78
	October, 2006	6	86			86
Reading-Comprehension	October, 2005	18	72			72
	October, 2006	11	73			73

Score Legend

RS Raw Score	%COR Percent Correct	SS Scaled Score
PERF Performance Category	MET Met Standard?	Comnt1 Comment 1
Comnt2 Comment 2		

Date	Test	Grade
October, 2005	MEAP Grade 5 Fall 2005	5
October, 2006	MEAP Grade 6 Fall 2006	6

Student Multi-Test (1.3)

What is special about this report?

- The **Multi-Test** parameter allows you to select up to four additional tests to print on this report.
- The first 4 scores are printed in the table section. Change them with the **Scores** parameter.
- Change the subtests with the **Subtests** parameter.
- Change the graph with the **Display Score** parameter.

Individual Historical Report

Student: **King, Sanad A**
 Grade: **5**
 ID: **6281298808**
 DOB: **4/8/1996**

District: **Willows**
 School: **Cottage Street School**
 Class: **G5 Cottage Street**

MEAP Grade 5 Fall 2006
10/31/2006

	SS	PERF	MET
MATH TOTAL	525	Met	Yes
ELA Reading+Writing	494	Basic	No
READING TOTAL	489	Basic	No
WRITING TOTAL	503	Met	Yes
SCIENCE TOTAL	503	Met	Yes

MEAP Grade 4 Fall 2005
10/31/2005

	SS	PERF	MET
MATH TOTAL	418	Met	Yes
ELA Reading+Writing	379	Basic	No
READING TOTAL	388	Basic	No
WRITING TOTAL	362	Basic	No

ELPA Grade 4 Spring 2006
4/15/2006

	SS	MinSS	Perf
Listening	63	66	
Reading	59	65	
Writing	60	62	
Speaking	67	72	
Comprehension	61	65	
OVERALL	602	626	High Int.

Student History (1.4)

What is special about this report?

- Use the **History** parameter to select up to 9 additional tests to print on this report.
- Unlike the Multi-Test report, the Subtests and Scores can be different from one test to another.
- By default, the first 3 scores and all the subtests are printed. Change them from within the **History** parameter - for each test. The History parameter has its own embedded Subtests and Scores buttons. This report does NOT look at the Subtests and Scores parameters.
- Optionally choose to print up to 5 demographic characteristics under the student's name using the **Spc. Code Display** parameter.

Class Student List MEAP Grade 4 Fall 2006

Grade: **4**
 District: **Willows**
 School: **Cottage Street School**
 Class: **Clark**

Abel, Austin M

ID: 36883688

DOB: 02/19/1997

Econ. Dis.:No-Ec.Dis; Ethnic Cat:White; Lim. Eng.:No-LEP; Sp. Ed.:No-sped;

	MATH	ELA	READNG	WRITNG
SS	434	414	430	383
PERF	Exceed	Met	Met	Basic
MET	Yes	Yes	Yes	No

Abelman, William S

ID: 9616606832

DOB: 09/01/1997

Econ. Dis.:No-Ec.Dis; Ethnic Cat:White; Lim. Eng.:No-LEP; Sp. Ed.:No-sped;

	MATH	ELA	READNG	WRITNG
SS	506	443	462	405
PERF	Exceed	Met	Exceed	Met
MET	Yes	Yes	Yes	Yes

Albertson, Kostas

ID: 320198819

DOB: 12/03/1997

Econ. Dis.:No-Ec.Dis; Ethnic Cat:White; Lim. Eng.:No-LEP; Sp. Ed.:No-sped;

	MATH	ELA	READNG	WRITNG
SS	471	438	455	405
PERF	Exceed	Met	Exceed	Met
MET	Yes	Yes	Yes	Yes

Allington, Jalen P

ID: 321866803

DOB: 11/07/1997

Econ. Dis.:No-Ec.Dis; Ethnic Cat:Black; Lim. Eng.:No-LEP; Sp. Ed.:No-sped;

	MATH	ELA	READNG	WRITNG
SS	399	389	397	374
PERF	Basic	Basic	Basic	Basic
MET	No	No	No	No

Alves, Amina

ID: 68016306

DOB: 07/08/1997

Econ. Dis.:No-Ec.Dis; Ethnic Cat:Asia/Pac; Lim. Eng.:Yes-LEP; Sp. Ed.:No-sped;

	MATH	ELA	READNG	WRITNG
SS	395	370	373	364
PERF	Basic	Basic	Basic	Basic
MET	No	No	No	No

Ashburton, Joshua D

ID: 363302669

DOB: 07/16/1997

Econ. Dis.:Yes-Ec.Dis; Ethnic Cat:Black; Lim. Eng.:No-LEP; Sp. Ed.:No-sped;

	MATH	ELA	READNG	WRITNG
SS	439	413	422	394
PERF	Exceed	Met	Met	Basic
MET	Yes	Yes	Yes	No

Class Student List (2.0)

What is special about this report?

- Control the Subtests and Scores that will print on the report.
- Use the **Cutoff** parameter to have TestWiz filter students based on a range of score that you determine.
- Rank order the list using the **Rank Order** parameter.
- Run this report for individual teachers, schools or the whole district.
- Choose to print demographic characteristics under each student's name.

Class History

Class: **Intonicci**

School: **Green Street Middle**

District: **Willows**

MEAP Grade 5 Fall 2006

10/31/2006

MEAP Grade 4 Fall 2005

10/31/2005

TeraNova Level 13

4/15/2005

Ace, Dakota
3962975992
10/17/1995

Sp. Ed.:No-sped

	%COR	SS	PERF		%COR	SS	PERF		NPR	STA	GE
MATH		539	Exceed	MATH		417	Met	READ	76	6	6.1
ELA		515	Met	ELA		429	Met	LANG	58	5	4.3
READNG		538	Exceed	READNG		453	Exceed	MATH	55	5	4
WRITNG	33	470	Basic	WRITNG	40	382	Basic	SCI	83	7	5.9
SCIEN	74	547	Exceed					SOC	62	6	4.6

Adam, Erica
3927690607
12/18/1995

Sp. Ed.:No-sped

MATH		500	Met	MATH		434	Exceed	READ	71	6	5.3
ELA		517	Met	ELA		427	Met	LANG	84	7	8
READNG		530	Met	READNG		441	Met	MATH	59	5	4.1
WRITNG	47	491	Basic	WRITNG	53	400	Met	SCI	78	7	5.4
SCIEN	62	531	Met					SOC	88	7	7.3

Ainsley, Emily
9979956879
6/7/1996

Sp. Ed.:No-sped

MATH		525	Met	MATH		437	Exceed	READ	82	7	7.2
ELA		510	Met	ELA		450	Exceed	LANG	70	6	5.2
READNG		530	Met	READNG		457	Exceed	MATH	98	9	8.5
WRITNG	33	470	Basic	WRITNG	73	436	Met	SCI	83	7	5.9
SCIEN	64	533	Exceed					SOC	62	6	4.6

Ainsley, Sierra
5397082679
6/14/1996

Sp. Ed.:No-sped

MATH		527	Exceed	MATH		454	Exceed	READ	99	9	12.9
ELA		548	Exceed	ELA		463	Exceed	LANG	96	9	11.9
READNG		563	Exceed	READNG		477	Exceed	MATH	98	9	8.5
WRITNG	60	517	Met	WRITNG	73	436	Met	SCI	93	8	7.4
SCIEN	82	559	Exceed					SOC	96	9	10.8

Almeida, John
8929902897
3/1/1995

Sp. Ed.:Yes-sped

MATH		531	Exceed	MATH		415	Met	READ	50	5	3.8
ELA		487	Basic	ELA		386	Basic	LANG	31	4	2.8
READNG		496	Basic	READNG		398	Basic	MATH	22	3	2.9
WRITNG	33	470	Basic	WRITNG	27	362	Basic	SCI	71	6	4.9
SCIEN	48	513	Met					SOC	42	5	3.4

Class History (2.11)

What is special about this report?

- View results for different tests on one page - up to 4 different tests at a time.
- Control the subtests and scores that will print.
- Apply the **Rank Order**, **Cutoff**, and **Special Codes** parameters to filter the students.
- Print this report by *Class* or *School*.
- Optionally choose to print up to 5 demographic characteristics under each student's name using the **Sp. Code Display** parameter.

Class Instructional Grouping Report

MEAP Grade 4 Fall 2006

Grade: **4** District: **Willows**
 Class: **Duncan** School: **Green Street Elem**

Math Total-Core Items (ALL)

All Students State Average
 Max Points: 61 65% [19] 68%

13 students with percent correct less than 75%

Alvarez, Austin M	64	Amington, Morgan E	67	Anderson, Alexis L	59
Anderson, Mariah G	66	Ashburton, Adriana C	51	Axelrod, Savannah K	52
Brinks, Stephanie A	64	Brown, Abigail C	66	Cole, Keith A	74
Coppola, Richard R	38	Daverno, Kaitlyn M	69	Macleod, Christian M	52
Marineau, Kathryn G	46				

Number & Operations

All Students State Average
 Max Points: 31 67% [19] 70%

14 students with percent correct less than 75%

Alvarez, Austin M	61	Amington, Morgan E	52	Anderson, Alexis L	61
Anderson, Mariah G	68	Ashburton, Adriana C	52	Axelrod, Savannah K	45
Brinks, Stephanie A	68	Brown, Abigail C	74	Brown, Alissa M	74
Browne, Dauson M	74	Coppola, Richard R	39	Daverno, Kaitlyn M	74
Macleod, Christian M	65	Marineau, Kathryn G	52		

Meaning

All Students State Average
 Max Points: 12 81% [19] 77%

5 students with percent correct less than 75%

Amington, Morgan E	58	Anderson, Alexis L	67	Axelrod, Savannah K	67
Coppola, Richard R	50	Marineau, Kathryn G	58		

Fluency

All Students State Average
 Max Points: 9 55% [19] 65%

18 students with percent correct less than 75%

Albertson, Seth M	56	Alvarez, Austin M	44	Amington, Morgan E	67
Anderson, Alexis L	67	Anderson, Mariah G	33	Ashburton, Adriana C	33
Axelrod, Savannah K	22	Brinks, Stephanie A	67	Brown, Abigail C	56
Brown, Alissa M	56	Brown, Troy J	56	Browne, Dauson M	56
Coppola, Richard R	33	Cowles, Zachary T	67	Daverno, Kaitlyn M	56
Macleod, Christian M	56	Marineau, Kathryn G	56	Thompson, Jordon I	67

Relationships

All Students State Average
 Max Points: 10 61% [19] 65%

12 students with percent correct less than 75%

Alvarez, Austin M	30	Amington, Morgan E	30	Anderson, Alexis L	50
Ashburton, Adriana C	30	Axelrod, Savannah K	40	Brinks, Stephanie A	40
Brown, Alissa M	70	Coppola, Richard R	30	Cowles, Zachary T	60
Daverno, Kaitlyn M	70	Macleod, Christian M	60	Marineau, Kathryn G	40

Class Instructional Grouping (2.9)

What is special about this report?

- Students are grouped by Objective.
- Create or select your own **Comparison Groups** with the **Gap Score** parameter.
- Change the cutoff by using the **Obj. Cutoff** parameter.
- If you want to see scores for all the students, set the Obj. Cutoff to greater than or equal to 0%.

Abers, Ian T				G3 Elm Street Elem			Elm Street Elem			Gr:3 MEAP Grade 3 Fall 2006					10/31/2006	
MATH	MathCore	MathExt	NumOpe	Measur	Geomtr	MathFut	ELA	READNG	RdgCore	RdgMC	RdgCR	WrdRec	NarTxt	InfTtxt		
RS	61	59	2	34	21	6	1		32	32	28	4	2	15	2	
%COR		98		97	100	100			91	97	67	100	94	100		
SS	382							356	383							
PERF	Exceed						Exceed	Exceed								
Adams, Brenden R				G3 Elm Street Elem			Elm Street Elem			Gr:3 MEAP Grade 3 Fall 2006					10/31/2006	
RS	54	52	2	29	20	5	1		30	30	26	4	2	14	1	
%COR		87		83	95	83			86	90	67	100	88	50		
SS	338							333	358							
PERF	Exceed						Met	Exceed								
Adams, Chance A				G3 Elm Street Elem			Elm Street Elem			Gr:3 MEAP Grade 3 Fall 2006					10/31/2006	
RS	37	36	1	21	11	5	1		13	13	12	1	2	7	1	
%COR		60		60	52	83			37	41	17	100	44	50		
SS	304							284	289							
PERF	Met						Basic	Basic								
Alabama, Erin E				G3 Elm Street Elem			Elm Street Elem			Gr:3 MEAP Grade 3 Fall 2006					10/31/2006	
RS	41	40	1	22	15	4	1		18	18	18	0	0	11	0	
%COR		67		63	71	67			51	62	0	0	69	0		
SS	310							304	305							
PERF	Met						Met	Met								
Alberto, Brandon M				G3 Elm Street Elem			Elm Street Elem			Gr:3 MEAP Grade 3 Fall 2006					10/31/2006	
RS	47	45	2	27	14	6	0		22	22	18	4	2	9	2	
%COR		75		77	67	100			63	62	67	100	56	100		
SS	321							313	318							
PERF	Met						Met	Met								
Albertson, Alyssa T				G3 Elm Street Elem			Elm Street Elem			Gr:3 MEAP Grade 3 Fall 2006					10/31/2006	
RS	58	56	2	34	18	6	0		31	31	27	4	2	15	2	
%COR		93		97	86	100			89	93	67	100	94	100		
SS	354							346	368							
PERF	Exceed						Exceed	Exceed								
Albertson, George A				G3 Elm Street Elem			Elm Street Elem			Gr:3 MEAP Grade 3 Fall 2006					10/31/2006	
RS	48	46	2	28	14	6	1		19	19	17	2	2	10	0	
%COR		77		80	67	100			54	59	33	100	63	0		
SS	323							315	308							
PERF	Met						Met	Met								
Albertson, Sadie I				G3 Elm Street Elem			Elm Street Elem			Gr:3 MEAP Grade 3 Fall 2006					10/31/2006	
RS	59	57	2	34	19	6	1		31	31	27	4	2	14	2	
%COR		95		97	90	100			89	93	67	100	88	100		
SS	360							350	368							
PERF	Exceed						Exceed	Exceed								
Alessandro, Austin M				G3 Elm Street Elem			Elm Street Elem			Gr:3 MEAP Grade 3 Fall 2006					10/31/2006	
RS	46	44	2	26	14	6	1		17	17	15	2	1	9	1	
%COR		73		74	67	100			49	52	33	50	56	50		
SS	319							299	302							
PERF	Met						Basic	Met								

Class Student Labels (2.10)

What is special about this report?

- The report prints 10 labels per page. It is designed for an 8 ½" x 11" sheet. You may order these custom self-adhesive labels directly from **dataMetrics Software**.
- By default, the first 4 scores are printed for each student, as are up to 18 subtests. To change the scores and subtests, use the **Scores** and **Subtests** parameters.

Item Analysis by School Report

MEAP Grade 5 Fall 2006

District: **Willows**
 School: **Cottage Street School**

Grade: **5**

WRITING TOTAL - Student Counts: Boys=32; Girls=147;

Multiple choice items are based on Percent. Open response items are averages of Raw Scores

Item	Boys	Girls	Diff	Omit	Mult	A	B	C	D	E	Item Description
31	2.66	2.82	-0.16								W-PR-04-01. Consider audience and purpose for writing
32	69	86	-17.0	0	0	69	16	6	9		W-SP-04-01. Spell correctly freq./less freq. encountered words
33	72	80	-8.0	0	0	72	9	12	6		W-GR-04-01. Write with or ID correct grammar and usage
34	75	73	2.0	0	0	3	16	6	75		W-PR-04-04. Identify peer's text needing improved organization
35	66	81	-15.0	0	0	12	66	9	12		W-GR-04-01. Write with or ID correct grammar and usage
36	66	71	-5.0	0	0	9	16	66	9		W-GR-04-01. Write with or ID correct grammar and usage
37	1.91	1.90	0.01								W-PR-04-03. Use or ID a variety of techniques for coherence

Writing-Mult. Choice - Student Counts: Boys=32; Girls=147;

Multiple choice items are based on Percent. Open response items are averages of Raw Scores

Item	Boys	Girls	Diff	Omit	Mult	A	B	C	D	E	Item Description
32	69	86	-17.0	0	0	69	16	6	9		W-SP-04-01. Spell correctly freq./less freq. encountered words
33	72	80	-8.0	0	0	72	9	12	6		W-GR-04-01. Write with or ID correct grammar and usage
34	75	73	2.0	0	0	3	16	6	75		W-PR-04-04. Identify peer's text needing improved organization
35	66	81	-15.0	0	0	12	66	9	12		W-GR-04-01. Write with or ID correct grammar and usage
36	66	71	-5.0	0	0	9	16	66	9		W-GR-04-01. Write with or ID correct grammar and usage

Writing-Const. Response - Student Counts: Boys=32; Girls=147;

Multiple choice items are based on Percent. Open response items are averages of Raw Scores

Item	Boys	Girls	Diff	Omit	Mult	A	B	C	D	E	Item Description
31	2.66	2.82	-0.16								W-PR-04-01. Consider audience and purpose for writing
37	1.91	1.90	0.01								W-PR-04-03. Use or ID a variety of techniques for coherence

Writing-Process - Student Counts: Boys=32; Girls=147;

Multiple choice items are based on Percent. Open response items are averages of Raw Scores

Item	Boys	Girls	Diff	Omit	Mult	A	B	C	D	E	Item Description
31	2.66	2.82	-0.16								W-PR-04-01. Consider audience and purpose for writing
34	75	73	2.0	0	0	3	16	6	75		W-PR-04-04. Identify peer's text needing improved organization
37	1.91	1.90	0.01								W-PR-04-03. Use or ID a variety of techniques for coherence

Writing-Grammar+Usage - Student Counts: Boys=32; Girls=147;

Multiple choice items are based on Percent. Open response items are averages of Raw Scores

Item	Boys	Girls	Diff	Omit	Mult	A	B	C	D	E	Item Description
33	72	80	-8.0	0	0	72	9	12	6		W-GR-04-01. Write with or ID correct grammar and usage
35	66	81	-15.0	0	0	12	66	9	12		W-GR-04-01. Write with or ID correct grammar and usage
36	66	71	-5.0	0	0	9	16	66	9		W-GR-04-01. Write with or ID correct grammar and usage

Writing-Spelling - Student Counts: Boys=32; Girls=147;

Multiple choice items are based on Percent. Open response items are averages of Raw Scores

Item	Boys	Girls	Diff	Omit	Mult	A	B	C	D	E	Item Description
32	69	86	-17.0	0	0	69	16	6	9		W-SP-04-01. Spell correctly freq./less freq. encountered words

School Item Analysis (3.1)

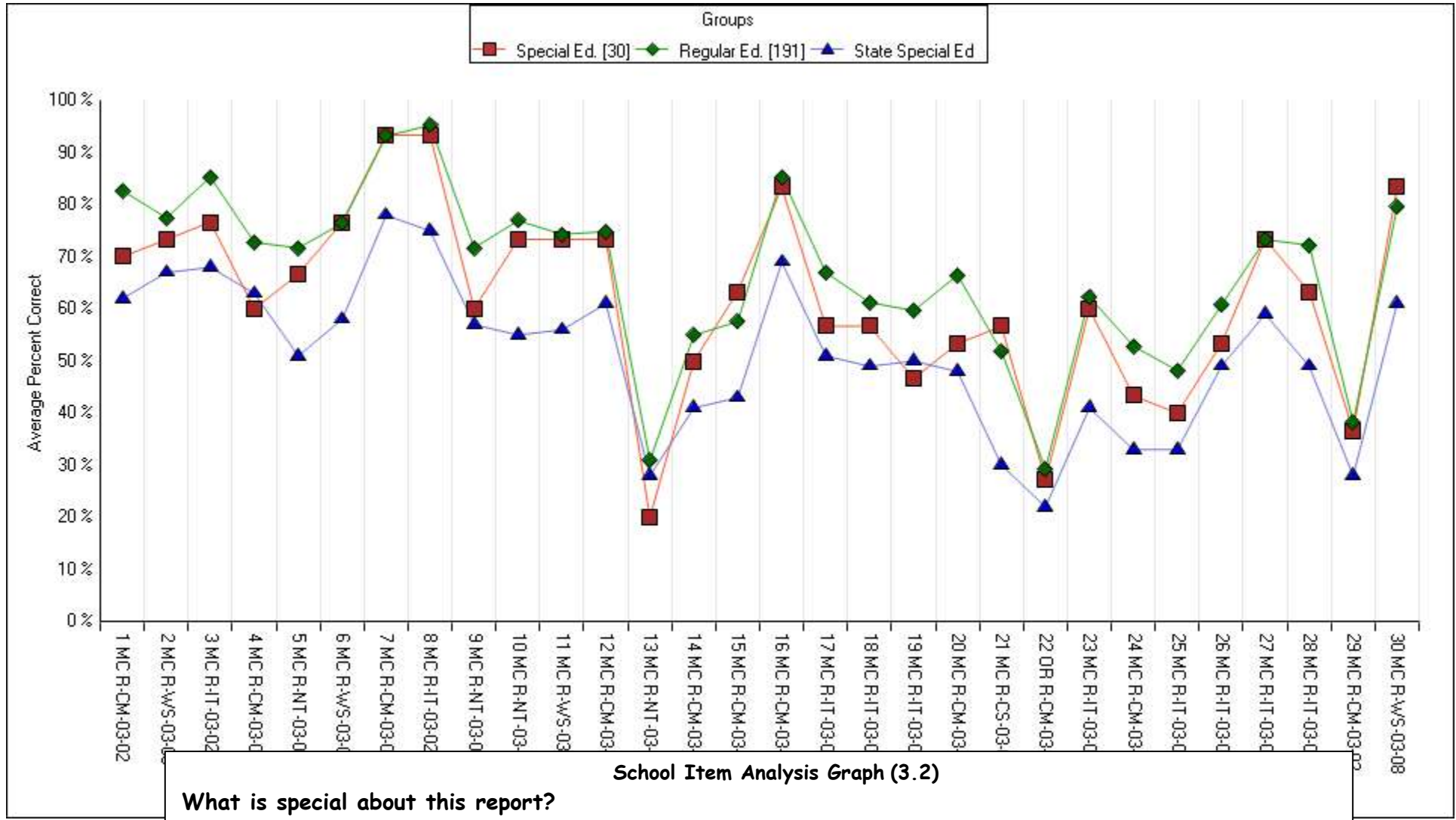
What is special about this report?

- This report summarizes scores for each item by district, class or school. The student version shows responses for each student.
- Use the **Gap Score** parameter to select a Rank Order for the items. Create or select your own **Comparison Groups** with the **Gap Score** parameter. Choose to rank the items in ascending or descending order.
- Click on an item when previewing a report and link to the question itself.
- You can further analyze the item responses for sub-groups of students by selecting a Special Code or a Cutoff Score.

Item Analysis Graph by School

MEAP Grade 4 Fall 2006

District: **Willows**
 School: **Cottage Street School**
 Students included: **30**
 Subtest: **Reading-Core Items**
 Rank Order: **None**



School Item Analysis Graph (3.2)

What is special about this report?

- A visual representation of how students did by item is available by class, school, district, and multiple districts.
- Use the **Gap Score** to select up to 3 comparison groups to include in your report. You can rank order results for each question against a comparison group. The rank order is controlled with Gap Score parameter.
- Click on an item when previewing a report and link to the question itself.
- Use the **Subtest** parameter to customize this report for only the subtests you want to see.

School Objectives Summary Report

MEAP Grade 8 Fall 2006

Grade: **8**
 District: **Willows**
 School: **Fisher Middle School**

Econ. Dis. based on MAX of 99 students; Not Econ. Dis. based on MAX of 128 students;

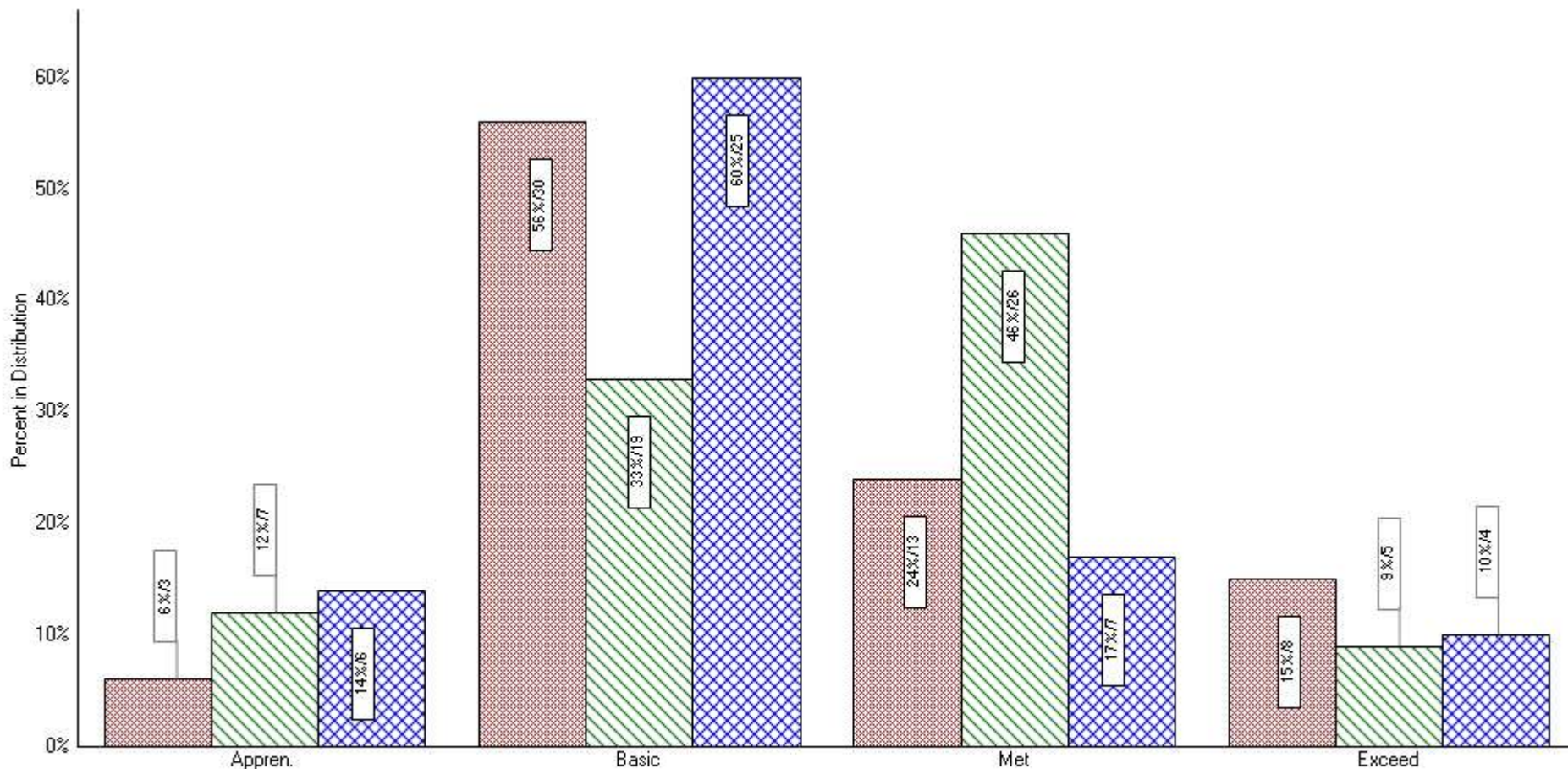
Objectives/Strands	Maximum Points	Econ. Dis. Percent Correct	Not Econ. Dis. Percent Correct	Difference
Math Total-Core Items	58	36	41	-5
Number & Operations	21	35	38	-3
Fluency	15	36	40	-4
Relationships	6	31	33	-2
Algebra	12	42	46	-4
Formulas	3	29	37	-8
Patterns	6	53	55	-2
Representation	3	33	36	-3
Geometry	16	32	38	-6
Transformation	12	34	39	-5
Spatial Reasoning	4	24	33	-9
Data & Probability	9	42	44	-2
Analysis	6	37	40	-3
Representation	3	52	53	-1
Reading	35	52	58	-6
Word Study	3	68	77	-9
Narrative Text	14	50	58	-8
Informational Text	2	45	50	-5
Comprehension	15	50	56	-6
Critical Standards	1	63	69	-6
Writing	15	44	49	-5
Writing Process	11	41	44	-3
Writing Genres	1	59	76	-17
Grammar & Usage	2	52	58	-6
Spelling	1	42	55	-13
Science	57	43	52	-9
Const. Response Items	12	28	40	-12
Constructing	15	37	46	-9
Reflecting	9	40	51	-11
Life Science	9	51	57	-6
Cells	2	51	64	-13
Ecosystems	1	38	45	-7
Evolution	1	29	35	-6
Heredity	2	58	57	1
Living Things	3	57	65	-8
Physical Science	12	44	53	-9
Matter & Energy	4	37	46	-9
Changes in Matter	3	46	60	-14
Motion of Objects	2	49	63	-14
Waves & Vibrations	3	47	51	-4
Earth Science	12	46	54	-8
Atmosphere/Weather	3	57	62	-5
Geosphere	2	39	56	-17
Hydrosphere	5	37	43	-6
Universe	2	56	64	-8

School Objectives Summary (3.3)

What is special about this report?

- This report is available for only those tests that have item details and objectives defined.
- Note the comparison of your students to a State group on the MEAP test.
- Using the **Gap Score** parameter, you can rank order the objectives by achievement at the local level, the state level, or the difference between the two. Choose to rank the objectives in ascending or descending order.
- You may limit the Objectives displayed to specific subtests.

Special Ed. Report



Test	Grade	Test Date	Number of Students
MEAP Grade 3 Fall 2006	3	10/31/2006	54
MEAP Grade 4 Fall 2006	4	10/31/2006	57
MEAP Grade 5 Fall 2006	5	10/31/2006	42

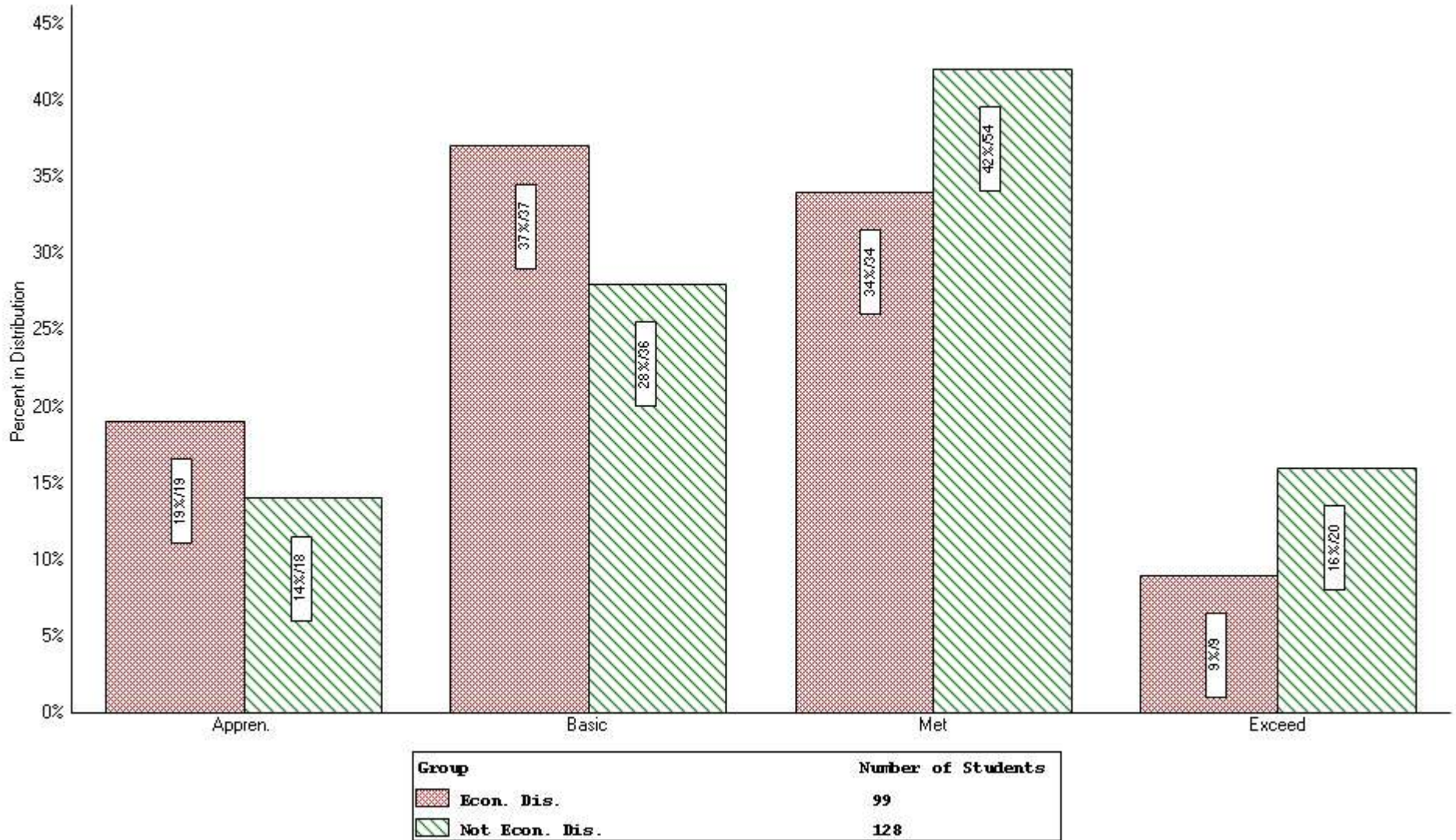
District Multi-Test Frequency Distribution Graph (4.6)

What is special about this report?

- View distribution of scores visually comparing results for up to 5 tests at a time. See results by school, district or multi-district.
- Select the score to graph with the **Display Score** parameter.
- In the **Multi-Test** parameter, select the **Population** to be **Cohort**, and the report will only include those students who took each of the selected tests.

District Multi-Group Frequency Distribution Report

MEAP Grade 8 Fall 2006 (10/31/2006)



District Multi-Group Frequency Distribution (4.9)

What is special about this report?

- View performance of up to 5 demographic groups at a time.
- Control the score to graph with the **Display Score** parameter.

District Summary Report

MEAP Grade 4 Fall 2006

Test Date: 10/31/2006

Grade: 4

District: Willows

Cottage Street School

	MATH	MathCore	MathExt	MathLnk	MathMC	MathCr	NumOpe	Measur	Geomtr	DataPr	MathFut	ELA	READNG	RdgCore	RdgLnk	RdgMC	RdgCR	WrdRec	NarTxt	InfTxt	Comp	
Students	71	71	71	71	71	71	71	71	71	71	71	71	71	71	71	71	71	71	71	71	71	71
RS(Mean)	44	42	3	4	42	2	23	13	4	4	1		21	21	5	20	1	3	2	7	9	
%COR(Mean)		68					71	67	61	63				61		68	83	79	62	67	53	
SS(Mean)	424											419	428									

Elm Street School

	MATH	MathCore	MathExt	MathLnk	MathMC	MathCr	NumOpe	Measur	Geomtr	DataPr	MathFut	ELA	READNG	RdgCore	RdgLnk	RdgMC	RdgCR	WrdRec	NarTxt	InfTxt	Comp	
Students	83	83	83	83	83	83	83	83	83	83	83	84	84	84	84	84	83	84	84	84	84	84
RS(Mean)	41	39	2	6	39	2	21	12	4	4	0		20	20	6	18	1	3	2	6	8	
%COR(Mean)		63					63	62	57	62				57		64	70	74	60	63	48	
SS(Mean)	417											412	420									

District Mean Statistics

	MATH	MathCore	MathExt	MathLnk	MathMC	MathCr	NumOpe	Measur	Geomtr	DataPr	MathFut	ELA	READNG	RdgCore	RdgLnk	RdgMC	RdgCR	WrdRec	NarTxt	InfTxt	Comp	
Students	154	154	154	154	154	154	154	154	154	154	154	155	155	155	155	155	154	155	155	155	155	155
RS(Mean)	43	40	3	5	41	2	22	12	4	4	1		21	21	6	19	1	3	2	6	8	
%COR(Mean)		66					67	65	59	63				59		66	76	76	61	65	51	
SS(Mean)	420											415	424									
Std Dev(RS)	10.48	10.01	0.92	1.55	9.52	1.65	5.88	3.44	1.59	1.32	0.48		6.61	6.61	2.01	5.99	0.43	1.11	1.08	2.38	2.95	

Subtest Legend

MATH MATH TOTAL	MathCore Math-Core Items	MathExt Math-Extended Items	MathLnk Math-Linking Items	MathMC Math-Mult. Choice
MathCr Math-Const. Response	NumOpe Number+Operations	Measur Measurement	Geomtr Geometry	DataPr Data+Probability
MathFut Math-Future Items	ELA ELA Reading+Writing	READNG READING TOTAL	RdgCore Reading-Core Items	RdgLnk Reading-Linking Items
RdgMC Reading-Mult. Choice	RdgCR Reading-Const. Response	WrdRec Reading-Word Recognition	NarTxt Reading-Narrative Text	InfTxt Reading-Informatnl Text
Comp Reading-Comprehension	Critic Reading-Critical Strand	WRITNG WRITING TOTAL	WrtMC Writing Mult. Choice	WrtCR Writing Const. Response
WrtPrc Writing-Process	WrtSpe Writing-Spelling	LISTEN LISTENING		

Score Legend

RS Raw Score	%COR Percent Correct	SS Scaled Score
---------------------	-----------------------------	------------------------

District Summary (4.4)

What is special about this report?

- The first part shows summaries for each building.
- The last part shows the summary for the district. However, if you use the **School** parameter and select specific buildings, the last page will be based only on the buildings you selected. This could be useful if you want to see a summary for a select group of buildings.
- The School Class Summaries report works the same way. The first section shows summaries for each of the classes. The next section shows the summary for each building.

District Cross-Tab Report

MEAP Grade 6 Fall 2006

Grade: 6

District: Willows

Count of Students for MATH TOTAL with Performance Category At or Above Met by Econ. Dis.

	No-Ec.Dis	Yes-Ec.Dis	Total
Counts	62	56	118
All	112	156	268

Percent of Students for MATH TOTAL with Performance Category At or Above Met by Econ. Dis.

	No-Ec.Dis	Yes-Ec.Dis	Total
Percent	55.4	35.9	44.0
All	41.8	58.2	100

Source: Based on the Special Codes as they are currently logged in Student Records.

All means all students regardless of cutoff.

Chi Squared = 10.02 with 1 degree(s) of freedom.

The groups are significantly different based on the selected cutoff score (at the 5% chi-square level).

District Cross-Tab (4.8)

What is special about this report?

- Based on a cutoff score, compare subgroups of students.
- Control the demographics for the report using the **Cross-Tab** parameter.
- TestWiz will tell you if there is significant difference in the performances of the groups.